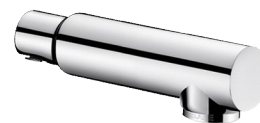


Stainless steel BIOCLIP spout

Ref. 20003

Spout L. 77mm Ø28mm for mixers with removable spouts



DESCRIPTION

Stainless steel BIOCLIP spout - Ref. 20003

Removable stainless steel BIOCLIP spout L. 77mm, Ø 28mm for easy cleaning/descaling of the interior or autoclaving. Fitted with a hygienic flow straightener, suitable for fitting a point-of-use BIOFIL filter.

Spout with smooth interior reduces bacterial development.

The second spout enables continuous use during cleaning/descaling of the first spout.

Suitable for all mixers and taps with BIOCLIP spout.

2 per pack.

ADVANTAGES



Infection control



Removable spout for internal cleaning/disinfection



Spout with smooth interior reduces bacteria

TECHNICAL CHARACTERISTICS

Stainless steel BIOCLIP spout - Ref. 20003

Spout length	77mm
Finish	Stainless steel
Norms	ACS
Warranty	