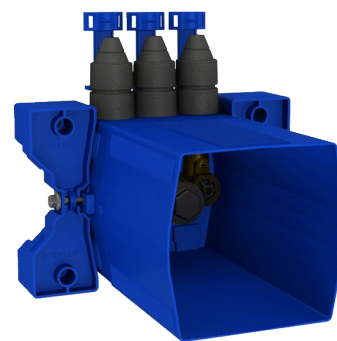


Recessed waterproof housing for TEMPOMIX 3 showers

Ref. 794BOX1

Time flow, kit 1/2



DESCRIPTION

Recessed waterproof housing for TEMPOMIX 3 showers - Ref. 794BOX1

Waterproof recessed housing for TEMPOMIX 3 for showers, kit 1/2:

Collar with waterproof seal.

Hydraulic connection from the outside and maintenance from the front.

Top inlet.

Adjusts to all types of installations (rails, solid walls, panels).

Compatible with wall finishes 10 - 120mm (while maintaining the minimum recessing depth of 93mm).

Suitable for standard or "pipe in pipe" supply.

Stopcocks and flow rate adjustment, filters, non-return valves and cartridge are all integrated and accessible from the front.

TEMPOMIX 3 single control mixer F $\frac{1}{2}$ ".

Supplied in 2 kits: secure system flush without sensitive elements.

30-year warranty.

Order with control plates references 794218 or 794219.

ADVANTAGES



Installation recessed in wall



Waterproof housing is adjustable and modular









System tested to over 500,000 operations



100% waterproof housing

TECHNICAL CHARACTERISTICS

Recessed waterproof housing for TEMPOMIX 3 showers - Ref. 794BOX1

Connector	$\frac{1}{2}$ "
Technology	Time flow
Height	150mm
Depth	93 - 190mm
Width	225mm
Flow rate	6 lpm
Norms	ACS      
Warranty	