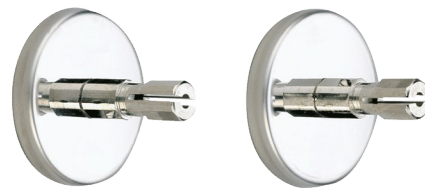


Fixing plate

Ref. 2392

For Ø 20mm tubes



DESCRIPTION

Fixing plate - Ref. 2392

Pack of two fixing plates for Ø 20mm shower curtain rails.
To mount shower curtain rail assembly.
Concealed fixings via a 304 stainless steel fixing plate.
With push-fit connectors for mounting.
Supplied with 4 screws 4 x 30 and 4 rawl plugs.
30-year warranty.

ADVANTAGES




Easy to install

Concealed fixings

TECHNICAL CHARACTERISTICS

Fixing plate - Ref. 2392

Diameter	Ø 18mm for Ø 20mm rails
Norms	
Warranty	