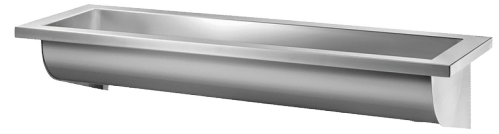


CANAL wall-mounted wash trough

Ref. 120300

Polished satin 304 stainless steel - L. 2400mm



DESCRIPTION

CANAL wall-mounted wash trough - Ref. 120300

Wall-mounted wash trough for wall-mounting, for 4 services - 2,400mm
Bacteriostatic 304 stainless steel.

Polished satin finish.

Stainless steel thickness: 0.8mm for the bowl, 1.5mm for surround and fixing brackets.

Easy to install: no joint concealers to install, lightweight trough.

Water control can be wall-mounted or deck-mounted.

Drainage on the right.

Without tap hole.

Supplied with hygienic M1"1/4 waste with concave grid. Without overflow.

Supplied with fixing elements.

CE marked. Complies with European standard EN 14296.

Weight: 13kg.



30-year warranty.

Possible to add a bacteriostatic 304 stainless steel splashback (ref. 100300).
[Formerly ref: 0211300015]

TECHNICAL CHARACTERISTICS

CANAL wall-mounted wash trough - Ref. 120300

Height	250mm
Length	2400mm
Width	400mm
Thickness	1mm (basin) et 1.5mm (edge and fixing brackets)
Finish	304 polished satin stainless steel

Norms	 
Warranty	

ADVANTAGES



Bacteriostatic 304 stainless steel, smooth surface

