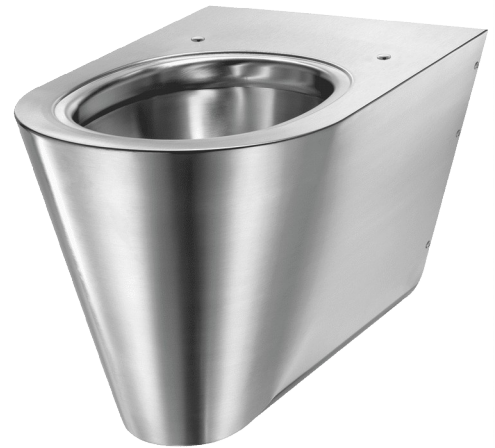


Wall-hung S21 S WC pan

Ref. 110310

Polished satin 304 stainless steel



DESCRIPTION

Wall-hung S21 S WC pan - Ref. 110310

Wall-hung WC pan, 360 x 350 x 535mm.
 Compatible with all standard frame systems available on the market.
 Elegant and simple design.
 Bacteriostatic 304 stainless steel.
 Polished satin finish.
 Stainless steel thickness: 1.5mm.
 One-piece pressed WC bowl, seam-free for easy maintenance and better hygiene.
 WC bowl surface is polished with rounded edges for easy cleaning. Concealed perimetral flushing rim.
 Horizontal water inlet: Ø 55mm.
 Horizontal waste outlet: Ø 100mm.
 Water saving: works with 4L or more of water.
 Shrouded pan.
 Pre-drilled holes for fixing the toilet seat. Supplied with stainless steel blanking caps when installed without toilet seat lid.
 Quick and easy to install from the front thanks to a stainless steel mounting frame.
 Supplied with fixing plate and 6 theft prevention TORX security screws.
 CE marked. Complies with European standard EN 997 for 4L flush.
 Weight: 11kg.
 10-year warranty.
 [Formerly ref: 0112030001]

ADVANTAGES



Bacteriostatic 304 stainless steel





Polished bowl surface



Elegant and simple design

TECHNICAL CHARACTERISTICS

Wall-hung S21 S WC pan - Ref. 110310

Height	350mm
Length	535mm
Width	360mm
Thickness	1.5mm
Finish	304 polished satin stainless steel
Norms	 
Warranty	