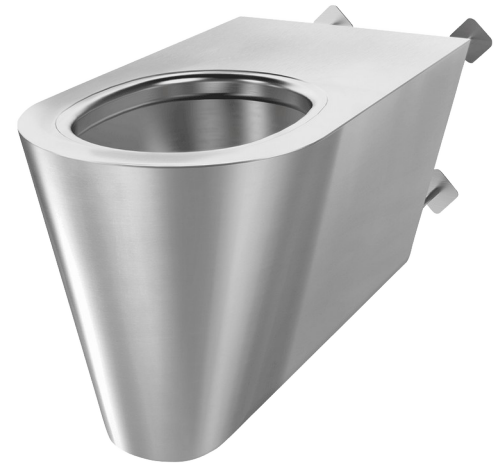


## 700 S TC wall-hung WC pan

Ref. 160710

Polished satin 304 stainless steel - Vandal-resistant



### DESCRIPTION

700 S TC wall-hung WC pan - Ref. 160710

Wall-hung WC pan with cross wall installation for service ducts.  
700mm elongated pan for improved comfort for people with reduced mobility (700 S TC).

Elegant and simple design.

Bacteriostatic 304 stainless steel.

Polished satin finish.

Stainless steel thickness: 1.5mm.

One-piece, pressed WC bowl, seam-free for easy maintenance and better hygiene.

WC bowl surface is polished with rounded edges for easy cleaning.

Concealed perimetral flushing rim.

Horizontal water inlet: Ø 55mm.

Horizontal waste outlet: Ø 100mm.

Water saving: works with 4L or more of water.

200mm threaded rod can be cut to size (other lengths available on request).

Shrouded WC pan.

CE marked. Complies with European standard EN 997 for 4L flush.

Weight: 16.5kg.

### ADVANTAGES



Bacteriostatic 304 stainless steel



Suitable for secure sector

### TECHNICAL CHARACTERISTICS

700 S TC wall-hung WC pan - Ref. 160710

Height	350mm
Length	700mm
Width	360mm
Thickness	1.5mm
Finish	Polished satin 304 stainless steel
Norms	 
Warranty	

