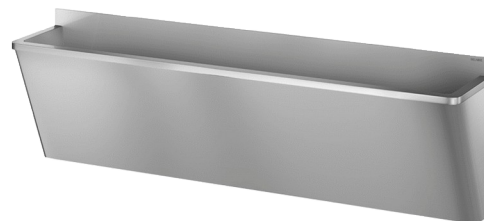


Surgical scrub-up trough with low upstand

Ref. 187020

Polished satin 304 stainless steel - 3 services - "Hygiene+" Design



DESCRIPTION

Surgical scrub-up trough with low upstand - Ref. 187020

Wall-mounted surgical scrub-up trough with 75mm upstand. Suitable for hospitals and healthcare facilities. Bacteriostatic 304 stainless steel. Polished satin finish. Stainless steel thickness: 1.2mm. Length 2,100mm, 3 services. Without tap hole. Smooth surface and rounded inside edges for easy cleaning. "Hygiene+": reduces niches where bacteria can develop, concealed trap, easy to clean. Drainage on the right. Without overflow. Supplied with fixing elements. CE marked. Complies with norm EN 14296. Weight: 37.6kg. 10-year warranty.

TECHNICAL CHARACTERISTICS

Surgical scrub-up trough with low upstand - Ref. 187020

Height	645mm
Length	2100mm
Width	400mm
Thickness	1.2mm
Finish	Polished satin 304 stainless steel
Norms	 
Warranty	

ADVANTAGES



Bacteriostatic 304 stainless steel

