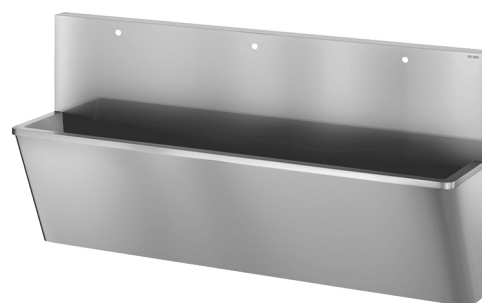


Surgical scrub-up trough with high upstand

Ref. 187100

Polished satin 304 stainless steel - 3 services - "Hygiene+" Design



DESCRIPTION

Surgical scrub-up trough with high upstand - Ref. 187100

Wall-mounted surgical scrub-up trough with 450mm upstand.
Suitable for hospitals and healthcare facilities.
Bacteriostatic 304 stainless steel. Polished satin finish. Stainless steel thickness: 1.2mm.
Length 2,100mm, 3 services. With 3 tap holes Ø 22mm.
Smooth surface and rounded inside edges for easy cleaning.
"Hygiene+" design: reduces niches where bacteria can develop, concealed trap, easy to clean.
Drainage on the right. Without overflow. Supplied with fixing elements and 1"1/4 waste.
CE marked. Complies with norm EN 14296.
Weight: 48.5kg
30-year warranty.

TECHNICAL CHARACTERISTICS

Surgical scrub-up trough with high upstand - Ref. 187100

Height	1020mm
Length	2100mm
Width	475mm
Thickness	1.2mm
Finish	Polished satin 304 stainless steel
Norms	 
Warranty	

ADVANTAGES



Bacteriostatic 304 stainless steel

