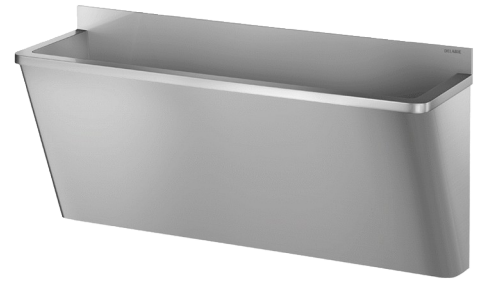


Surgical scrub-up trough with low upstand

Ref. 18602015

Polished satin 304 stainless steel - 2 services - L. 1,600mm





DESCRIPTION

Surgical scrub-up trough with low upstand - Ref. 18602015

Wall-mounted surgical scrub-up trough with 75mm upstand. Suitable for hospitals and care facilities. Complies with the former HTM64 guidance and new Health Building Note 00-10: Part C - Sanitary Assemblies. Length 1,600mm, 2 services. Without tap hole. Bacteriostatic 304 stainless steel. Polished satin finish. Stainless steel thickness: 1.2mm. Smooth surface and rounded edges for easy cleaning. "Hygiene +" design: reduces bacterial niches, concealed trap, easy to clean. Drainage on the right. Without overflow. Supplied with fixing elements. CE marked. Complies with norm EN 14296. Weight: 29.8kg. 10-year warranty.

TECHNICAL CHARACTERISTICS

Surgical scrub-up trough with low upstand - Ref. 18602015

Height	645mm
Length	1600mm
Width	400mm
Thickness	1.2mm
Finish	Polished satin 304 stainless steel
Norms	
Warranty	

ADVANTAGES



Bacteriostatic 304 stainless steel

