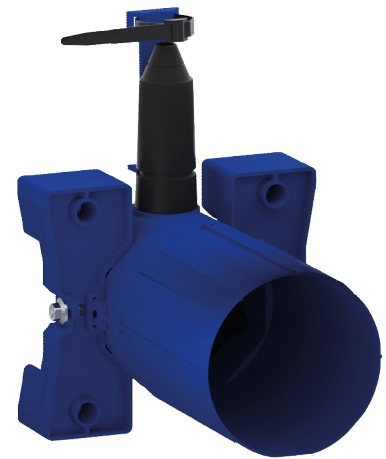


Recessed waterproof housing for BINOPTIC

Ref. 370SBOX

Mains supply, kit 1/2



DESCRIPTION

Recessed waterproof housing for BINOPTIC - Ref. 370SBOX

Recessed waterproof housing for BINOPTIC 2, kit 1/2:
Mains supply 230/6V (cable and transformer supplied).

Recessed waterproof housing:

- Collar with waterproof seal.
 - Hydraulic connection from the exterior and maintenance from the front.
 - Modular installation (rails, solid walls, panels).
 - Compatible with walls from 10 to 120mm (whilst maintaining the minimum recessing depth of 83mm).
 - Adaptable standard pipework or "pipe in pipe".
 - Integrated stopcock and flow rate adjuster, filter and solenoid valve are accessible from the front.
 - BINOPTIC 2 tap F½".
 - Supplied in 2 kits: secured system purge without sensitive elements.
- 10-year warranty.
Order with control plate references: 370000, 370010, 370100 or 370110.

ADVANTAGES



Installation recessed in wall



230/6V mains supply



100% waterproof housing

TECHNICAL CHARACTERISTICS

Recessed waterproof housing for BINOPTIC - Ref. 370SBOX

Connector	F½"
Height	150mm
Depth	83-190mm
Width	175mm
Norms	ACS
Warranty	