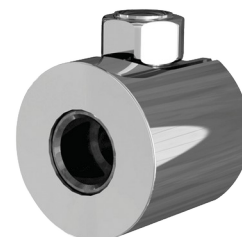


Reinforced exposed union

Ref. 841215

For TEMPOMATIC 3 & 4



DESCRIPTION

Reinforced exposed union - Ref. 841215

Reinforced exposed union.
 Supplied with sleek concealment plate.
 Recommended for the installation of TEMPOMATIC 3 (443006) or
 TEMPOMATIC 4 (443436, 443536) wall-mounted basin taps with exposed
 supply.
 30-year warranty.

ADVANTAGES



Reinforced union



Sleek concealment



Compatibility: TEMPOMATIC 3 and
 TEMPOMATIC 4

TECHNICAL CHARACTERISTICS

Reinforced exposed union - Ref. 841215

Connector	½"
Length	47mm
Diameter	Ø 51mm
Warranty	